

Refer to the following pages for more information on trims, colors, and options.

## REFLECTORS



**Clear Semi-Specular**  
Catalog No. CS



**Straw**  
Catalog No. STR



**Champagne Gold**  
Catalog No. CG



**Gold**  
Catalog No. GD



**Wheat**  
Catalog No. WT



**Umber**  
Catalog No. UM



**Pewter**  
Catalog No. PW



**Black Baffle**  
Catalog No. BFL

## LUMINOUS GLASS



**Luminous Ring**  
Catalog No. LR  
Shown in Red

Also available in: Clear  
Blue  
Green



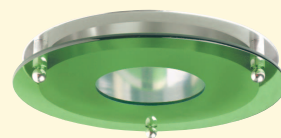
**Luminous Disk**  
Catalog No. LD  
Shown in Green

Also available in: Clear  
Blue  
Red



**Luminous Rings**  
Catalog No. LR2  
Shown in Blue

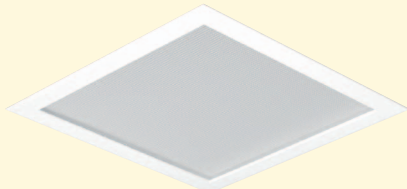
Also available in: Clear  
Red  
Green



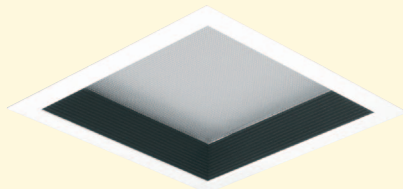
**Luminous Disk Open**  
Catalog No. LDO  
Shown in Green

Also available in: Clear  
Blue  
Red

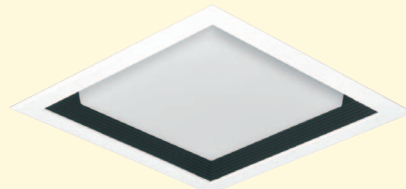
## TRIMS



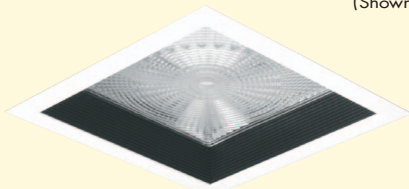
**C73 Lens**  
Catalog No. C73



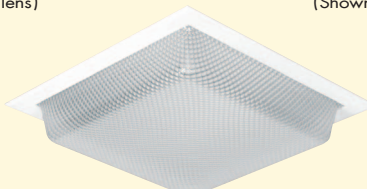
**Baffled Splay**  
Catalog No. BS  
(Shown with C73 lens)



**Drop Opal Lens**  
Catalog No. DO  
(Shown with Baffled Splay)



**Fresnel Lens**  
Catalog No. FF  
(Shown with Baffled Splay)



**Drop Acrylic Lens**  
Catalog No. DAL

## SERIES LV45 TRIM OPTIONS



**Step Glass**  
Catalog No. STG



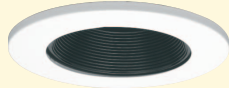
**Pinhole Spot**  
Catalog No. PHS



**Eyeball**  
Catalog No. EYB



**Slot Aperture**  
Catalog No. SLA



**Black Baffle**  
Catalog No. BFL



**White Baffle**  
Catalog No. WBFL



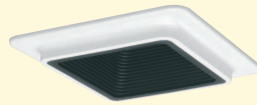
**Wall Wash**  
Catalog No. BWW



**Specular Clear Reflector**  
Catalog No. SCC



**Elbow**  
Catalog No. ELB



**Square**  
Catalog No. SQB



**Gimball Ring**  
Catalog No. GBR

## SERIES DRM FILTER OPTIONS

KODAK SUFFIX	COLOR	COMPATIBLE MATERIAL
OA	Greenish Yellow	Black-and-white contact and duplicating materials, projection films
OC	Light Amber	Contact and enlarging papers
1	Red	Some blue-sensitive materials, some KODAK LINAGRAPH papers, most phototypesetting materials, KODAGRAPH projection
1A	Light Red	Slow orthochromatic materials, KODALITH and KODAGRAPH orthochromatic materials, high-resolution plates
2	Dark Red	Fast orthochromatic materials, orthochromatic LINAGRAPH papers, some green-sensitive X-ray films, KODAK EKTALINE papers
6B	Brown	INDUSTREX films and papers and other blue-sensitive X-ray films
7B	Green	Infrared laser films
10	Dark Amber	Kodak VERICOLOR slide film 5072, KODAK VERICOLOR print film 4111, KODAK PANALURE papers
13	Amber	All KODAK PANALURE, KODAK EKTACOLOR, and KODAK RESISTO Rapid Pan papers
GBX-2	Red	All blue-sensitive and most green-sensitive medical and dental X-ray films