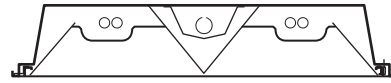
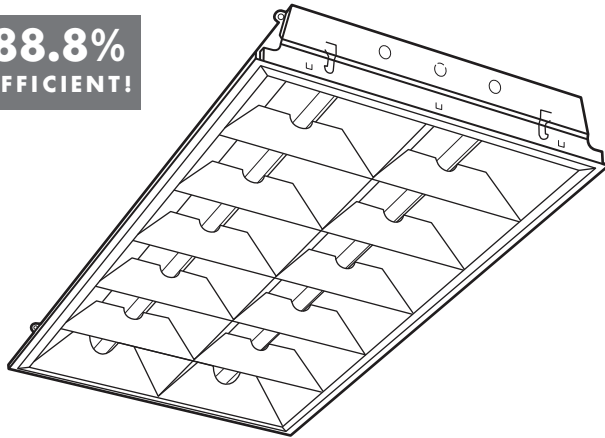


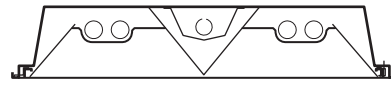
2' x 2' & 2' x 4' EFFICIENT TROFFER

SERIES **EFT**
 VOLTAGE TYPE JOB _____

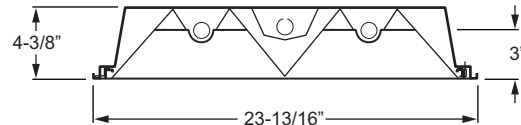
88.8%
EFFICIENT!



2 Twin Tube lamps



2 U-lamps (1-5/8" leg spacing)



2 T8 lamps

SPECIFICATIONS

- HOUSING – 22 gauge die-formed C.R.S.
- DOOR FRAME & LOUVER – Door: 20 gauge C.R.S., flat with mitered corners. T-slot steel hinge allows reversible hinging and latching. Louver: 25 gauge C.R.S.
- FINISH – Door and Housing: 92% minimum average reflective white powder coat with multi-stage iron/phosphate prepared metal. Louver: Highly reflective matte white powder coat.
- ELECTRICAL – Electronic ballast standard, instant start T8, rated Class P.
- LABELS – UL/CUL listed as recessed fluorescent luminaire suitable for dry or damp locations.
- MOUNTING – NEMA Type "G" standard. NEMA Type "F" available.

FEATURES

- The 88.8% highly efficient EFT surpasses most comparable product offerings in quality and efficiency.
- Designed to provide economical efficient lighting.
- Full 3" cross baffles provide lamp cutoff and assist in glare reduction.
- Fully enclosed, spring-loaded cam latches allow years of hassle-free maintenance.
- T-slot steel hinge ensures positive retention when door is opened.
- Deep reinforcement ribs provide added strength.
- Integral T-bar clips quickly secure fixture to structure.
- Field convertible to NEMA Type "F".
- All parts painted after fabrication to facilitate installation, increase efficiency, and inhibit corrosion.
- This fixture is proudly made in the USA.

ORDERING INFORMATION

Submittal

EXAMPLE: SERIES TYPE WIDTH LENGTH TOTAL WATTAGE/LAMPS TYPE OPTIONS BALLAST VOLTAGE
EFT G - 2 4 - 2 32 - OPTIONS - EB2 - UNV

SERIES	
EFT	Efficient Troffer (No air handling)
CEILING TYPE	
G	NEMA Type "G"
F	NEMA Type "F" (field convertible)
NOMINAL WIDTH	
2	2'
NOMINAL LENGTH	
2	2'
4	4'

TOTAL LAMPS	
2	
LAMP WATTAGE/TYPE	
2' FIXTURE LAMP OPTIONS:	
17	2', 17 watt T8
31UN	2', U-bent, 31 watt T8, 1-5/8" leg spacing
40TT	2', 40 watt long twin tube
4' FIXTURE LAMP OPTIONS:	
32	4', 32 watt T8
OPTIONS	
EM	Emergency ballast

BALLAST TYPE	
EB2	2-lamp electronic ballast
VOLTAGE	
120	120V
277	277V
UNV	120 - 277V
347	347V

Note: For more options/accessories, ballast combinations, and product details, please consult factory.



Williams Catalog #EFTG-24-232-EB2
 Test Report #14240.0, Dated 08/06/08

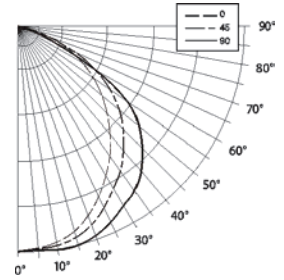
Lamp Type: F32T8/835/RS
 Lamp Quantity: 2

CANDLEPOWER DISTRIBUTION

VERT. ANG.	HORIZONTAL ANGLE			ZONAL LUMENS
	0	45	90	
0	2032.	2032.	2032.	
5	2013.	2021.	2028.	192.9
15	1923.	1978.	2051.	561.8
25	1697.	1807.	1949.	839.2
35	1430.	1589.	1813.	1007.1
45	1114.	1327.	1554.	1025.4
55	802.	984.	1197.	883.8
65	481.	587.	385.	500.3
75	204.	176.	126.	181.2
85	56.	48.	31.	49.5
90	0.	0.	0.	

LUMEN SUMMARY

ZONE	LUMENS	% LAMP	% FIXTURE
0 - 30	1594.	27.0	30.4
0 - 40	2601.	44.1	49.6
0 - 60	4510.	76.4	86.1
0 - 90	5241.	88.8	100.0
0-180	5241.	88.8	100.0



TOTAL LUMINAIRE OPTICAL EFFICIENCY = 88.8%

SPACING CRITERIA: END= 1.1 DIAG.= 1.2 ACROSS= 1.4

ZONAL CAVITY COEFFICIENTS

EFFECTIVE FLOOR CAVITY REFL. = .20

CEILING WALL RCR	.80			.70			.50		
	.70	.50	.30	.70	.50	.30	.50	.30	.10
0	106	106	106	103	103	103	99	99	99
1	98	95	91	96	93	90	89	87	84
2	91	84	79	89	83	78	80	76	72
3	84	76	69	82	74	68	72	67	62
4	77	68	61	75	66	60	64	59	54
5	71	60	53	69	59	52	57	51	46
6	65	54	46	63	53	46	51	45	41
7	60	48	41	58	48	41	46	40	35
8	55	43	36	54	43	36	42	35	31
9	51	39	32	49	38	31	37	31	27
10	47	35	28	46	35	28	34	28	23

QUANTITY ESTIMATOR

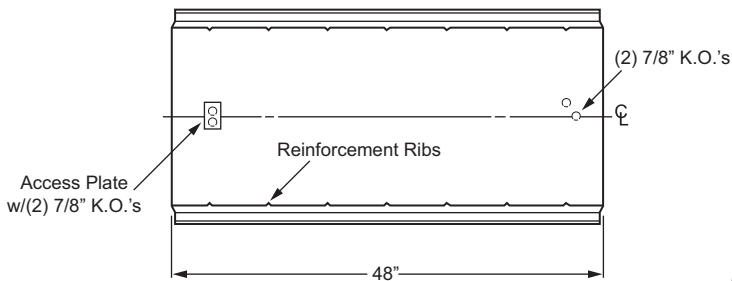
NUMBER OF FIXTURES REQUIRED - ITEM #: **EFTG-24-232**

ROOM SIZE	+/- 40 fc.	+/- 60 fc.	+/- 80 fc.
30'x30' (900 sq. ft.)	10	15	20
50'x50' (2500 sq. ft.)	28	43	57
100'x100' (10,000 sq. ft.)	114	170	227

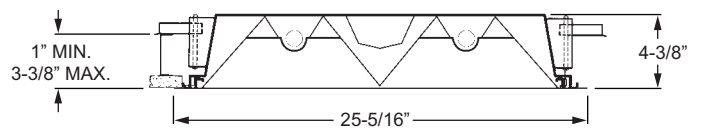
Calculations based on standard reflectance of 80/50/20 and a light loss factor of .85 with a 9'-0" ceiling height.

	EFT	2X4 standard 3-lamp T8 parabolic	
Fixture efficiency	88.8%	77.1%	Light level calculated on 9' ceilings 60'x60' room dimensions, 80/50/20 reflectances, 95 LLD, 90 LDD, horizontal light level on 2.5' workplane height. Fixture spacing: 2x4 8x10 centers, 2x2 8x8 centers.
Lighting power density	.70 W/ft ²	1.03 W/ft ²	
Input wattage	60 W	77 W	
Average maintained horizontal light level	55 Fc	69 Fc	

BACK VIEW



CROSS SECTION NEMA TYPE "F" INSTALLATION



MAXIMUM RECOMMENDED CEILING OPENING IS 24-3/8" x 48-3/8"
 For continuous row mounting, add 49-5/16" for each additional fixture to obtain ceiling opening. 1-5/16" between end plates.

